

- Natural flow station
- NWS flow station

Table1 Stream Gages (56) in Columbia Basin

Gage Name	Lon (°W)	Lat (°N)	NWS	Natural flow	Drainage Area (km²)
Columbia R at Mica Dam, BC 12227100	-118.375	52.125	1971-2006	1929-1999	20908
Columbia R at Revelstoke, BC 12229800	-118.125	51.125	1971-2006	1929-1999	24849
Columbia River at Keenleyside Dam, BC 12239500	-117.875	49.375	1971-2006	1929-1999	35825
Duncan R at Duncan Dam, BC 12322405	-116.875	50.375	1971-2006	1929-1999	2080
Kootenai R at Libby Dam, MT 12301921	-115.625	48.375	1971-2006	1929-1999	25446
Kootenai R at Corra Linn, BC 12322730	-117.125	49.625	1971-2006	1929-1999	47239
Flathead R at Kerr Dam, MT 12371800	-114.125	47.625	1971-2006	1929-1999	17094
Pend Oreille R at Waneta, WA 12399350	-117.3	48.9	1971-2006	1929-1999	69435
Columbia R at Chief Joseph Dam, WA 12437990	-119.6	48	1971-2006	1929-1999	198027
Columbia R at Priest Rapids Dam, WA 12472710	-119.8	46.6	1971-2006	1929-1999	251383

Clearwater R at Dworshak, ID 13340990	-116.3	46.5	1971-2006	1929-1999	5824
Snake R at Ice Harbor, ID 13352980	-118.9	46.3	1971-2006	1929-1999	261022
Columbia R at The Dalles, OR 14103950	-121.2	45.6	1971-2006	1929-1999	602245
Snake River at Milner, ID 13087995	-114.02	42.52	1971-2006	1929-1992	54067
Snake River at Brownley, ID 13289710	-116.9	44.8	1971-2006	1929-1999	171144
Snake R at Hells Canyon Dam, ID-OR, 13290450	-116.7	45.3	1971-2006	1929-1992	171823
Snake R (Right Bank) blw Lower Granite WA, 13343595	-117.4	46.6	1971-2006	1929-1992	248862
Snake R nr Moran, WY 13011000	-110.55	43.8	1971-2006	1929-1999	1931
Snake R nr Irwin, ID 13032500	-111.22	43.35	1971-2006	1929-1999	13427
Henrys Fork nr Rexburg, ID 13056500	-111.9	43.82	1971-2006	1929-1992	7332
Snake R at Neeley, ID, 13077000	-112.86	42.77	1971-2006	1929-1999	38681
Snake R nr Minidoka (at Montgomery), ID, 13082000	-113.49	42.66	1971-2006	1929-1999	46644

Owyhee R blw Owyhee Dam, ID, 13183000	-117.25	43.65	1971-2006	1929-1992	27149
Payette R nr Payette, ID, 13251000	-116.92	44.03	1971-2006	1929-1992	8154
Snake R blw CJ Strike Dam nr Grand View, ID,	-115.983	42.95	1971-2006	1929-1992	92806
Boise River at Boise 13202000	-116.05	43.52	1971-2006	1929-1992	6988
Bonneville 14128860	-121.9	45.65	1971-2006	1929-1992	609646
Brilliant 12322970	-117.62	49.3	1971-2006	1929-1999	47741
Cabinet Gorge -12391900	-116.625	48.125	1971-2006	1929-1999	60491
Chelan (s) -12452400	-120.02	47.83	1971-2006	1929-1999	2189
Calearwater at conf. NF 13340000	-116.25	46.47	1971-2006	1929-1992	13673
Grand Coulee (S) 12436100	-119	48	1971-2006	1929-1999	196221
Gorge 12177710	-121.23	48.67	1971-2006	1929-1999	2829.03
Grande Ronde 13333000	-117.43	45.93	1971-2006	1929-1999	8131

John Day 14048006	-120.7	45.7	1971-2006	1929-1999	572881
La Grand 12085510	-122.32	46.83	1971-2006	1929-1999	922.52
Little Goose 13343930	-118	46.5	1971-2006	1929-1999	251124
Long Lake 12432510	-117.83	47.83	1971-2006	1929-1999	15530
Lower Monumental 13352595	-118.5	46.5	1971-2006	1929-1999	260221
Maleur River 13233300	-117.22	43.98	1971-2006	1929-1992	9337
Mayfield 14237810	-122.58	46.5	1971-2006	1929-1999	3589
McNary 14019195	-119.3	45.9	1971-2006	1929-1999	539241
Merwin 14220010	-122.57	45.95	1971-2006	1929-1999	2414
Mossyrock 14234802	-122.42	46.53	1971-2006	1929-1999	2925
Snake at Murphy 13172500	-116.42	43.28	1971-2006	1929-1992	93651
North Fork 14209805	-122.1	45.15	1971-2006	1929-1999	1639

Noxon Rapids 12391301	-115.875	48.125	1971-2006	1929-1999	57784
Oxbow 13290049	-116.8	45	1971-2006	1929-1999	171416
Pelton 14092455	-121.23	44.72	1971-2006	1929-1999	20623
Post Falls 12419000	-116.97	47.7	1971-2006	1929-1999	10063
Rock Island 12462552	-120.1	47.4	1971-2006	1929-1999	233959
Rocky Reach 12453682	-120.25	47.5	1971-2006	1929-1999	229926
Salmon at Whitebird 13317000	-116.32	45.75	1971-2006	1929-2006	33599
Swift 14217610	-122.2	46.05	1971-2006	1929-1999	1071
Wanapum 12464612	-119.9	46.9	1971-2006	1929-1999	236569
Wells 12450652	-119.9	48	1971-2006	1929-1999	226051

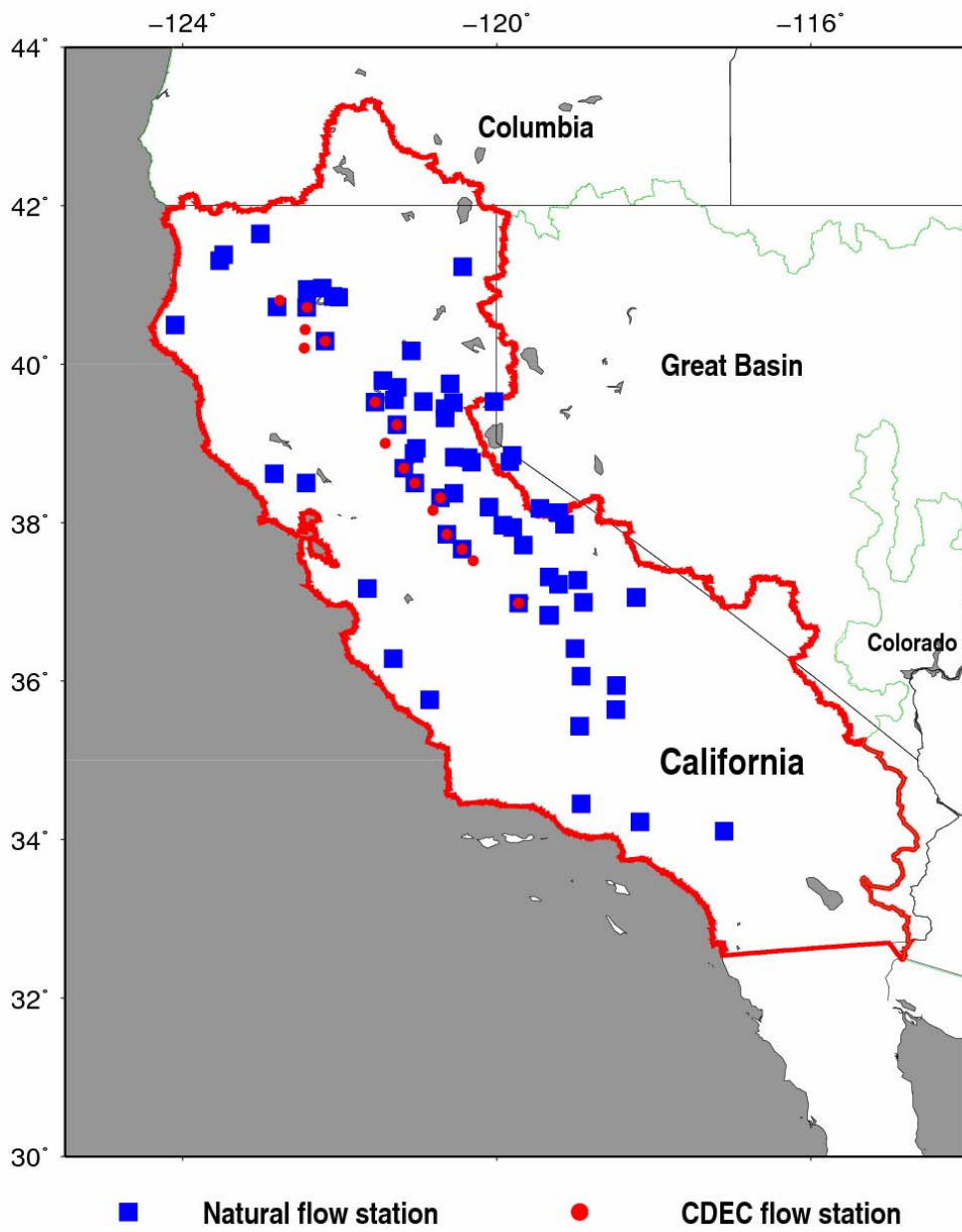


Table2 Stream Gages (10) in California Basin

Gage Name	Lon (°W)	Lat (°N)	CDEC	Natural flow	Drainage Area (km²)
Stanislaus R – Goodwin (New Melones Res), CA (CDEC SNS)	-120.637	37.852	1900-2007	1900-2007	2316
Yuba R nr Smartville, CA (CDEC YRS)	-121.273	39.235	1900-2007	1900-2007	4283
American R at Folsom Dam, CA (CDEC AMF)	-121.183	38.683	1900-2007	1900-2007	5050
Shasta Dam Inflow, CA (CDEC SHA)	-122.417	40.717	1987-2007	1987-2007	20291
Consumnes R at Michigan Bar, CA (CDEC CSN)	-121.044	38.50	1907-2007	1907-2007	3175
Feather R at Lake Oroville, CA (CDEC FTO)	-121.547	39.522	1905-2007	1905-2007	7679
Tuolumne R – La Grange Dam, CA (CDEC TLG)	-120.441	37.666	1900-2007	1900-2007	4337
Mokelumne-Mokelumne Hill, CA (CDEC MKM)	-120.719	38.313	1905-2007	1905-2007	1863
New Hogan Lake (Calaveras R), CA (CDEC NHG)	-120.814	38.155	1987-2007	1987-2007	1214
Sacramento R abv Bend Bridge, CA (CDEC SBB)	-122.186	40.289	1905-2007	1905-2007	26457

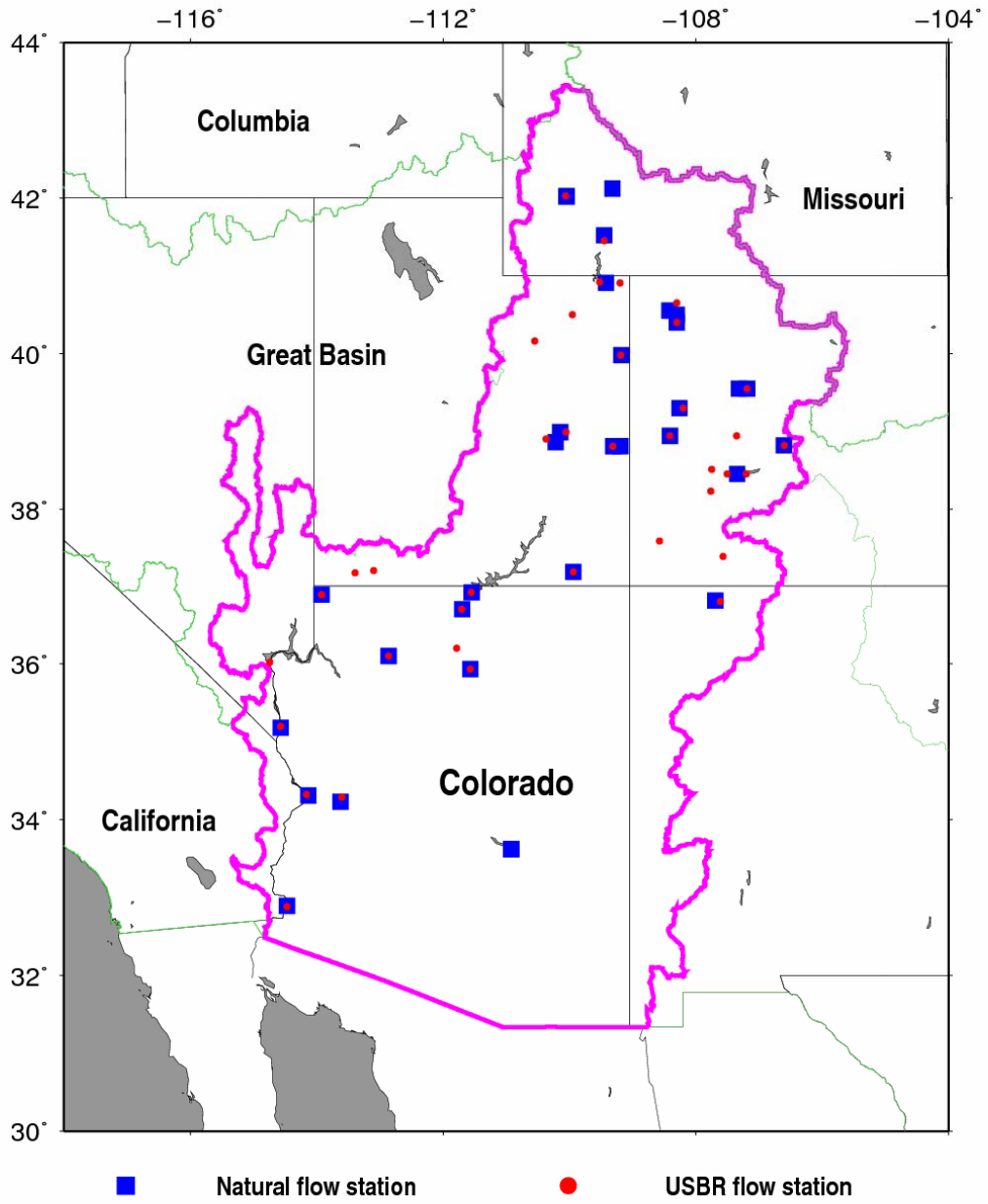


Table3 Stream Gages (21) in Colorado Basin

Gage Name	Lat (°N)	Lon (°W)	USBR	Natural flow	Drainage Area (km²)
Colorado R at Glenwood Springs, CO 9072500	39.55	-107.19	1906-2004	1906-2004	11219
Colorado R near Cameo, CO 9095500	39.30	-108.20	1906-2004	1906-2004	19922
Gunnison R near Grand Junction, CO 9152500	38.94	-108.41	1906-2004	1906-2004	19958
Colorado R near Cisco, CO 9180500	38.81	-109.31	1906-2004	1906-2004	58587
Green R near Greendale, UT 9234500	40.91	-109.20	1906-2004	1906-2004	39452
Yampa R near Maybell, CO 9251000	40.40	-108.30	1906-2004	1906-2004	8472
Little Snake R near Lily, CO 9260000	40.65	-108.30	1906-2004	1906-2004	9592
Duchesne R near Randlett, UT 9302000	40.50	-109.95	1906-2004	1906-2004	9589
San Juan river near Bluff, UT 9379500	37.18	-109.94	1906-2004	1906-2004	61379
Colorado R at Lees Ferry, AZ 9380000	36.92	-111.55	1906-2004	1906-2004	278070

Colorado R above Davis Dam, AZ-NV 9423000	35.20	-114.57	1906-2004	1906-2004	433501
Colorado R above Parker Dam, AZ-CA 9426000	34.32	-114.16	1906-2004	1906-2004	457419
Colorado R above Imperial Dam, AZ-CA 9427520	32.88	-114.47	1906-2004	1906-2004	471586
Bill Williams R below Alamo Dam, AZ 9429500	34.29	-113.60	1906-2004	1906-2004	11435
Gunnison R near Blue Mesa , CO 9124800	38.45	-107.20	1906-2004	1906-2004	9092
Virgin R at Littlefield 9415000	36.89	-113.92	1906-2004	1906-2004	12698
Colorado R nr Grand Canyon, AZ 9402500	36.10	-112.86	1906-2004	1906-2004	372170
San Rafael R nr Green River, UT 9328500	38.90	-110.37	1906-2004	1906-2004	4562
White R nr Watson, UT 9306500	39.98	-109.18	1906-2004	1906-2004	10956
Paria R at Lees Ferry, AZ 9382000	36.70	-111.70	1906-2004	1906-2004	3572
Little Colorado R nr Cameron, AZ 9402000	35.93	-111.57	1906-2004	1906-2004	66561